



GEAR CUTTING & ENGINEERING

ABN 37 088 724 556

CAPABILITY STATEMENT

General & Precision Engineering

- CNC Machining • CNC Milling • Spur Gears • Helical Gears • Bevel Gears
- Worm Wheels & Shafts • Internal Gears • Internal Splines & Keyways

COPYRIGHT © 2014, Jenmick Gear Cutting & Engineering Pty. Ltd.

Jenmick Gear Cutting & Engineering Pty. Ltd.

8 Bassett Street,
PO Box 8167,
Gladstone, Qld, 4680

P: 07 4972 0021
F: 07 4972 0024

E: sales@jenmick.com.au

www.jenmick.com.au



COMPANY OVERVIEW

We are an industry leader in the manufacturing of gears and machined components, renowned for the accuracy and precision of our manufacturing processes. Jenmick Gear Cutting & Engineering Pty Ltd operates from a modern, well equipped facility, centrally located in the busy industrial area of Gladstone, Queensland, Australia. Established in 1999 by Clifton and Sandra Dimitrov, Jenmick is a machining workshop, which has the capacity to carry out very precise and complex machining operations on our CNC equipment.

From its earlier days, Jenmick has built an Australia wide reputation for the quality of its gears. We have since expanded our services to also include general engineering. As a family-owned and operated business, our customers know that they will receive friendly, personalised service each and every time they contact us. We maintain strong relationships with our customers.

Please contact us to discuss your particular requirements and situation, to determine how we can assist. Jenmick looks forward to working with you and contributing to the success of your business.





Injector Nozzles



Helical Gears with Internal Splines



Hopper Wheel in Housing



Wheels & Wheel Shafts



Helical Gear



Spur Gear Set



MACHINING & GEAR CUTTING CAPABILITIES

CNC MACHING CENTRES: 4 AXIS

- HAAS VF-3
- HAAS VF-3SS
(Max Capacity 1150mm x 500mm x 635mm)

CNC LATHES

- 2-HAAS SL-30
(Max Capacity \varnothing 430mm x 898mm Long)

BORERS

- Webster & Bennet Vertical Borer: 1500mm table - Digital read out
- Sharman Horizontal Borer: 2500mm table

CENTRE LATHES

- Up to 630mm swing x 3000mm

MILLING MACHINES

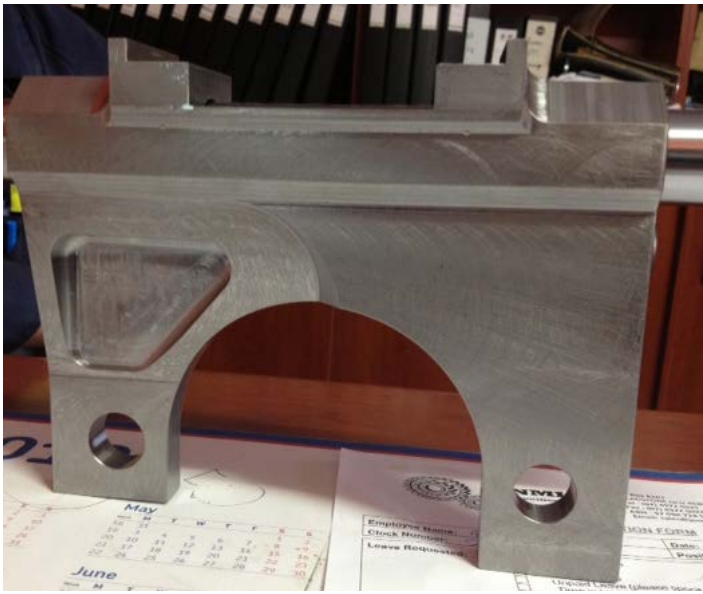
- Comprehensive range of universal machines up to 1500mm x 360mm

GEAR CUTTING

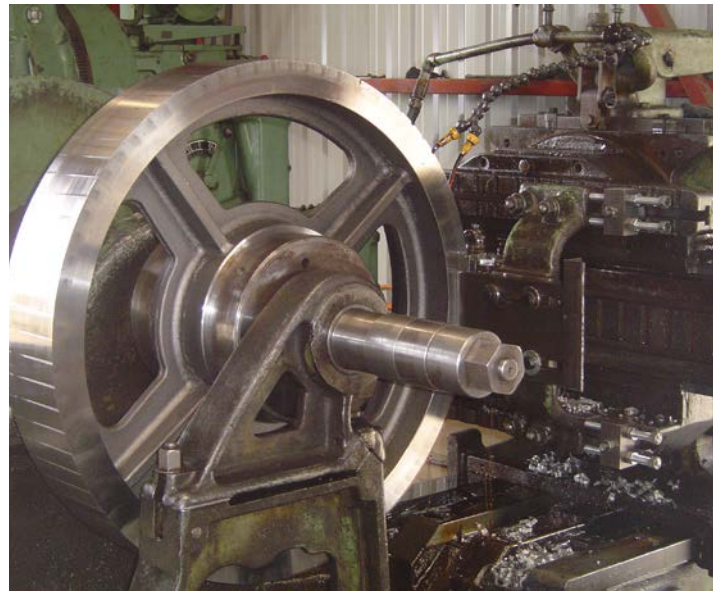
- Spur & Helical Gears up to: \varnothing 1600mm and up to 350mm face
- Internal & External Splines
- Worm Wheels & Shafts
- Internal & External Ring Gears

OTHER SERVICES

- Breakdowns - 24hr Call Out
- Keyways
- Gearbox Inspections & Repairs
- Reverse Engineering
- 1 off or Batch Component Manufacturing
- Large Radial Arm Drills
- Drill Press
- 100 Tonne Press
- Tig Welding
- Light Fabrication
- Pick-up & Delivery



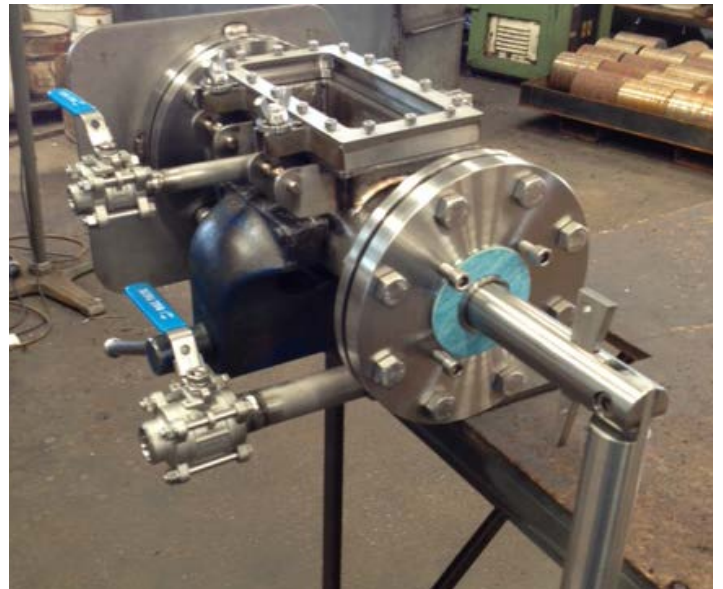
Bearing Support Caliper
milled in HAAS VF-3



Spur Gear
being cut in Sunderland Gear Planer



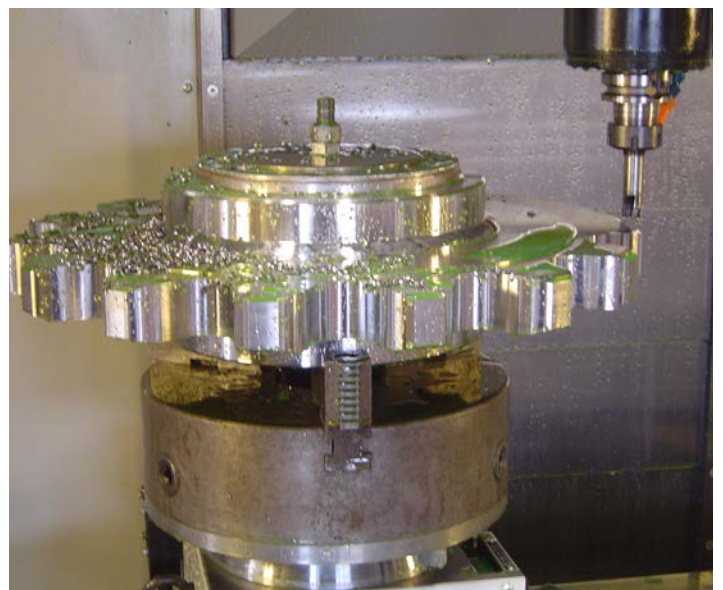
Elbow Clamp
milled in HAAS VF-3



Manufactured Cyanide Sampler



Hose Tail Sockets machined in HAAS SL-30



Sprocket being milled in HAAS VF-3



OUR MISSION

To manufacture and supply precision machined components and services to a diverse base of Australian industries in such a manner that we form long-term, on-going relationships with all of our customers.

OUR VALUES

Uncompromising integrity, fairness, ethics and business conduct in all matters and the treatment of each other, our employees, our customers and our suppliers, in the same manner we would want to be treated.

OUR VISION

To be the customer's first and best choice for the products and services we provide.
Our customer's needs will determine our path. Our values will guide us.

SERVICING THE FOLLOWING INDUSTRIES:

- ALUMINA
- OIL & GAS
- RAIL
- COAL
- MARINE
- PORTS
- AGRICULTURE
- POWER



ABN 37 088 724 556

CONTACT

For more information visit our website at:

www.jenmick.com.au

Gladstone Workshop

8 Bassett Street, Gladstone Qld 4680

Clifton Dimitrov

P: (07) 4972 0021

F: (07) 4972 0024

M: 0407 744 328

E: clifton@jenmick.com.au

Sandra Dimitrov

P: (07) 4972 0021

F: (07) 4972 0024

M: 0417 820 011

E: sandy@jenmick.com.au

David McKay

P: (07) 4972 0021

F: (07) 4972 0024

M: 0400 366 530

E: dave@jenmick.com.au

FOR ALL GENERAL ENQUIRIES, PLEASE CONTACT OUR SALES TEAM:

P: (07) 4972 0021

E: sales@jenmick.com.au

24 HOUR BREAKDOWN SERVICE: 0407 744 328